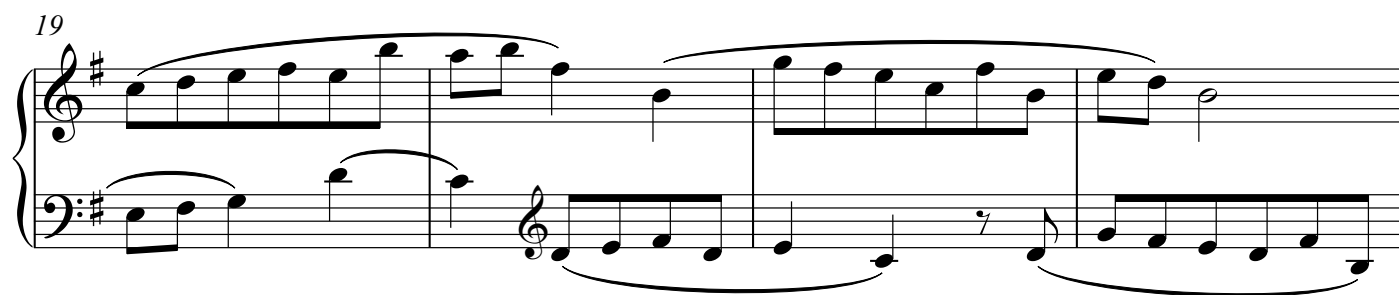
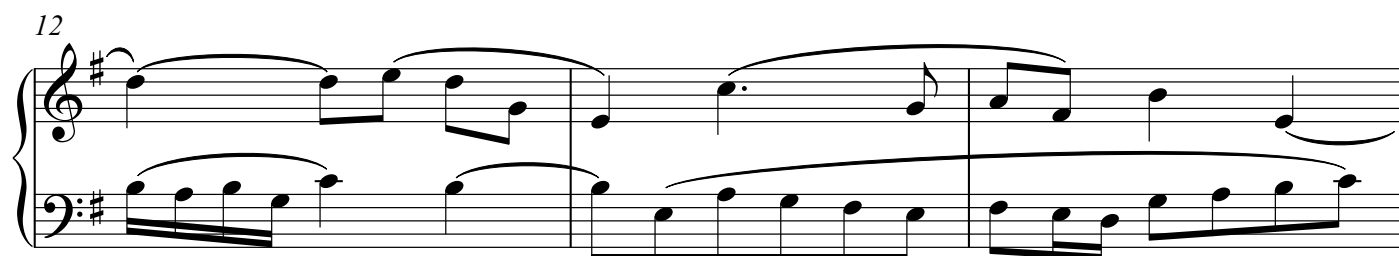
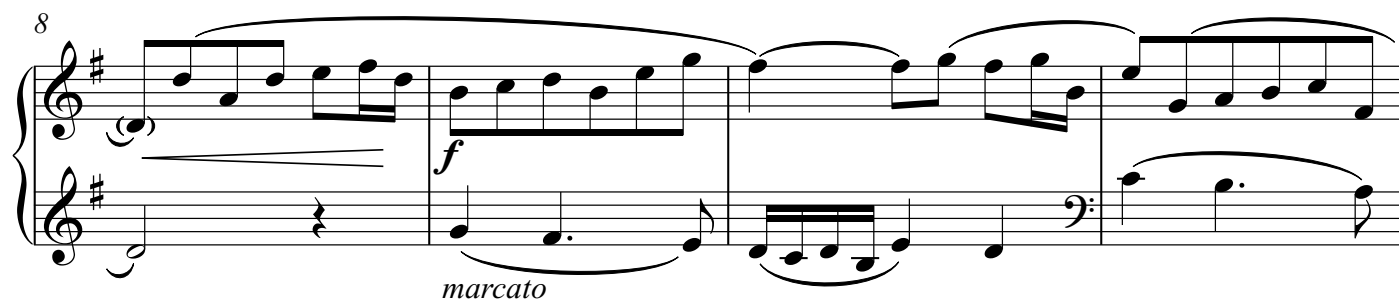
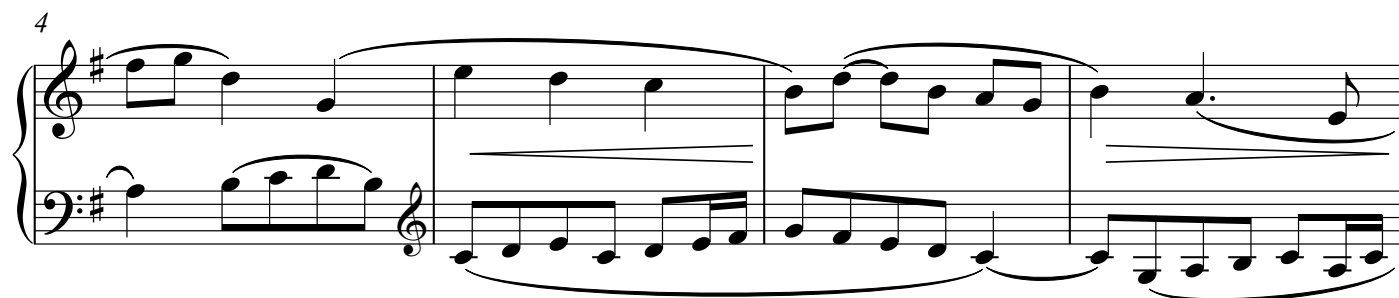
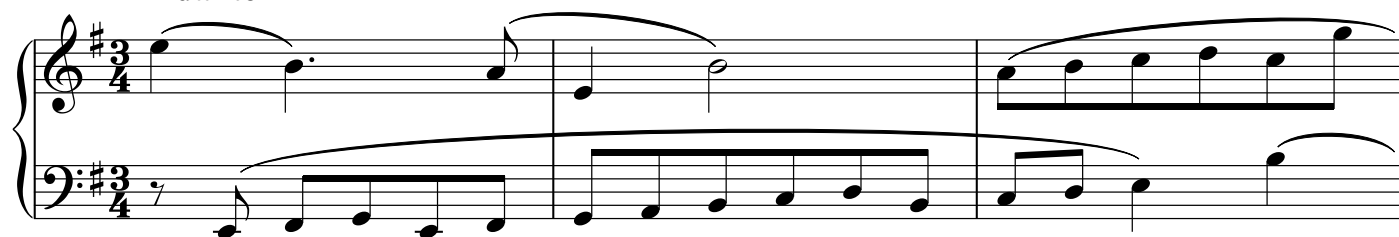


ПРИЛОЖЕНИЕ

Родные просторы

А. Штейнвиль

Andante



23

Measures 23-26 of a piano piece in G major. The right hand features a continuous eighth-note melody with a rising contour, while the left hand provides a steady eighth-note accompaniment. Measure 23 begins with a quarter rest in the right hand.

27

Measures 27-30. The right hand continues its eighth-note melody. A forte (*f*) dynamic marking is placed at the beginning of measure 27. The left hand maintains its eighth-note accompaniment.

31

Measures 31-33. The right hand melody continues. The left hand accompaniment changes to a half-note pattern starting in measure 31. Dynamic markings *poco*, *a poco*, and *diminuendo* are placed above the left hand staff in measures 31, 32, and 33 respectively.

34

Measures 34-36. The right hand melody continues. The left hand accompaniment returns to an eighth-note pattern. Measure 34 begins with a half rest in the right hand.

37

Measures 37-40. The right hand melody continues. The left hand accompaniment changes to a half-note pattern. A pianissimo (*pp*) dynamic marking is placed above the right hand staff in measure 39.

41

Measures 41-44. The right hand melody continues. The left hand accompaniment changes to an eighth-note pattern. The piece concludes with a double bar line at the end of measure 44.